

Custom HOME OF THE WEEK

Wheelchair accessible home suits family

When Debbie and Mike Hall were shopping for a house 10 years ago, they had trouble finding what they needed — a house that was wheelchair accessible throughout. Then they met custom house designer and builder Mike Cohen.

Cohen built the Halls a home that had open spaces and no confining hallways that would impede their son's ability to maneuver around the entire house. Now that the family's needs have outgrown their home, the couple immediately turned again to Cohen and his staff at MC Construction Consultants Inc.

The open concept of the 2,906-square-foot home is dramatic and effective. Light flows in through an abundance of large windows, which enhances the flowing lines of the custom design. Rooms are large and naturally lighted, including the utility room, which Debbie loves. Cohen added cabinets and a sink, provided ample counter space for folding clothes

warming glow is appreciated on chilly mornings, plus it adds ambiance to the evening meal since it also can be seen from the dining room.

However, the room Debbie appreciates most is her son's bathroom, mainly



Debbie says.

"Building the large deck was a fun process. For the railing I wanted something different and we came up with the idea of putting in cables. They are just about invisible from a distance and it doesn't block our view."

Working with Cohen and his crew once again has been a pleasure, Debbie says.

because of the room's size and its wheelchair accessibility.

The large living room has a wall of windows that overlook the scenic wetlands that glow when the sun begins its descent. Debbie says Cohen knew about her craving for light and designed the house with plenty of windows in all the rooms. Even the master bathroom has large windows.

"Oh, I love our bathroom!" Debbie exclaims. "When I lay in the tub I can look outside to the wetlands through the enormous picture window."

Another thing that is plentiful in the Halls' home is parking space. There is a three-car garage on the main level and a two-car garage at the basement level. That garage is attached to their daughter's studio apartment that has a large bedroom, kitchenette, bathroom, walk-in closet and storage space. Cohen designed the apartment to fit her special needs as well.

The exterior of the home got the same treatment as the inside,

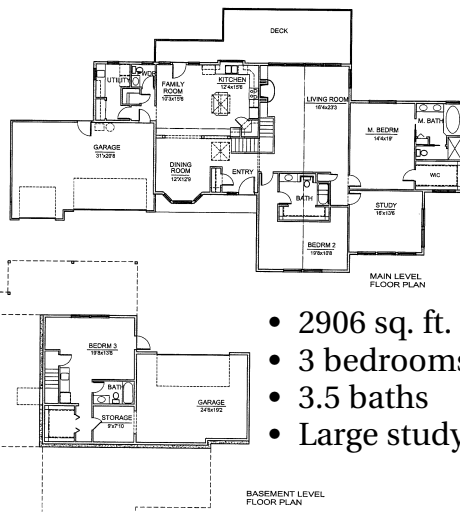
Working with Cohen and his crew once again has been a pleasure, Debbie says. "Mike loves a challenge. You tell him what you're thinking and he just gets out his pencil and starts going," she says. "When we came to him this time it was because we wanted more space for grown children. He built an apartment for my daughter and for my son he built a suite fit for a king. That bathroom is big enough to have a party in!"



and installed a rod for hanging clothes.

Cohen's use of closet space is unique. For example, the coat closet in the front entry is located in a half-wall that also serves as a plant shelf. It keeps the dining room from being closed off and it eliminates wasted space. He designed the kitchen pantry the same way.

Another unique feature is the gas fireplace in the corner of the kitchen. Its



- 2906 sq. ft.
- 3 bedrooms
- 3.5 baths
- Large study



Our personalized service includes:

- Custom plan design
- Professional project management
- Quality craftsmanship
- Accurate estimation of your project

CUSTOM HOMES ARE OUR SPECIALTY

360-456-6307 • www.mcconstruction.com