

Custom HOME OF THE WEEK

Visitors' favorite room is master bath

By Liz Bennett

Paul and Gretchen Winder's two-level home has so many special touches that selecting a favorite room is almost impossible.

"I like everything about it," Gretchen enthusiastically says of the home that was built by MC Construction Consultants, Inc., "but I think my favorite part of the house is the master bath."

She explains that the walk-in shower and large soaking tub are in the same enclosed room, which has no doors. Natural light flows into the area because of the large windows that surround the space.

"Everybody that comes over wants to see that room — it's the one room that everybody likes," she says. "Our kids love it. They never shower in their own bathroom, which is still pretty much brand new."

Next on her list of favorites is the downstairs family room, which is both the game room and children's play area.

"The basement is different because the floor is made of mauve and earth colored concrete. It was hand troweled and looks like 3-foot squares of stone."

The concrete was covered with protective coats of varnish, then waxed to enhance the look of stone. Area rugs add a punch of color and warmth to the maintenance-free floor. Gretchen said they liked the idea of a concrete floor because of the foot traffic that comes directly from the backyard. A quick swipe of a wet cloth and muddy footprints are gone.

Also downstairs are the boys' bedrooms, their bathroom, a utility room and an exercise room.

Because the house design allowed for changes, the upstairs

living area reflects the couple's desire for open areas.

"We started with a fairly simple floor plan, then marked it up. We moved walls and got rid of all the hallways," Gretchen explains.

A visitor's tour of the home begins in the wide, welcoming entry that has a plant shelf that crosses over the entryway and continues into the dining room. Stepping into the home, the eyes take in the sweeping view of the great room and past it to the backyard.

The steep angles of the vaulted ceiling add depth and visually increase the size of the rooms. Once in the great room, the view expands to the kitchen and dining rooms that are open to the living space.

Another thing that adds drama to the great room is the mirror that covers the space from the fireplace mantle to the ceiling. The large windows on each side of the fireplace make the already substantial room appear even larger.

Gretchen appreciates the storage space of the pantry that covers one wall of the dining room. The two boys, age 8 and 2, like the

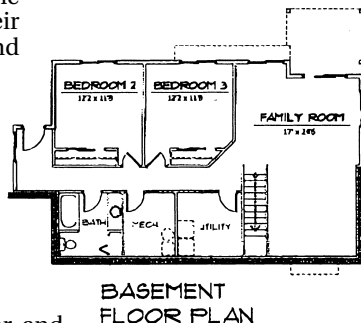
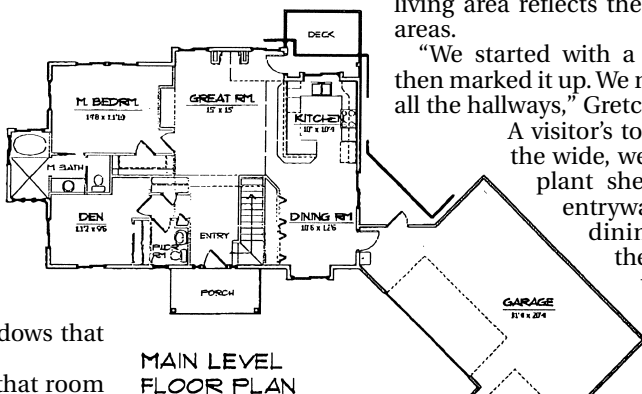
room's window seat, since it gives the older boy a comfortable place to watch for the bus. At the end of the school day, the seat is where the younger boy keeps an eye out for the bus that will bring his brother home.

The position of the garage is another feature that the couple likes.

"I love it. The angle of the garage and the circle driveway give the area a courtyard effect," Gretchen says.

To contact MC Construction about this house design or the company's other custom homes, call 360-456-6307 or go online to www.mcconstruction.com.

- 2519 sq. ft.
- 3 bedrooms
- 2.5 baths
- 3 car garage
- Den
- Family room
- Walk in shower
- Plant shelves



MC MC CONSTRUCTION CONSULTANTS, INC.

Our personalized service includes:

- Custom plan design
- Professional project management
- Quality craftsmanship
- Accurate estimation of your project

CUSTOM HOMES ARE OUR SPECIALTY

360-456-6307 • www.mcconstruction.com